

CERTIFICATE OF LOCATION OF GOVERNMENT CORNER

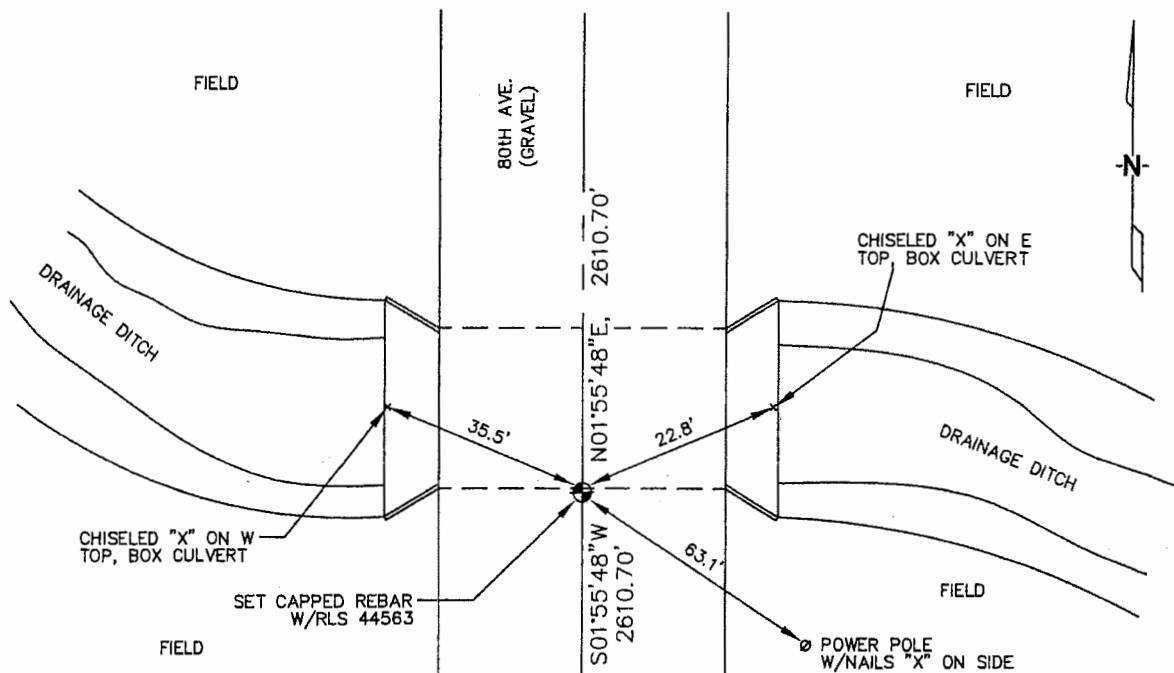
EAST 1/4 Corner of Section 17, Township 105, Range 42, 5TH P.M.

STATE OF MINNESOTA, County of MURRAY

At the corner location shown on the sketch :

- On _____ found _____
- left monument as found, lowered monument, removed monument (explain)
- On 3/15/2006 set A 5/8" REBAR WITH CAP; RLS 44563.

Sketch of reference ties



N: 661,768.75
E: 2,122,818.98
MN SOUTH, NAD 83

Statement of evidence relative to this corner location is on back page

I hereby certify that this document and the data contained herein was prepared by me or under my direct supervision.

Thomas V. Zeff 4/20/06
Thomas V. Zeff Date

Registration No. 44563

- Land Surveyor, Professional Engineer
- County Surveyor, County Engineer

OFFICE OF THE COUNTY RECORDER

County of _____

SEP 28 2006

I hereby certify that this document was filed in the Co. Recorders office at _____ M. on the day of _____ A.D., 20

County Recorder James V. Johnson
By _____, Deputy

DOCUMENT NO. _____

STATEMENT OF EVIDENCE:

EAST 1/4 CORNER, SECTION 17, T. 105 N., R. 42 W.,
MURRAY COUNTY, MINNESOTA

- 1861 D.W. Wellman & S.S. Smoot, US. Deputy Surveyors, monumented corner.
- ? Date Murray Co. located a concrete monument, 4" below grade.
Tie: NW-63.8' to nail & cap in power pole.
- 04/1977 Murray Co. located monument, 6" below grade.
Ties: SW-22.7' to bottom of bridge rail;
SE-21.7' to bottom of bridge rail.
- 3/15/2006 Ulteig Engineers, Inc., Survey Crew, Brain Payne Party Chief, found nothing. Set a 5/8" rebar with cap: RLS 44563.
Ties: NW-35.5' to chiseled "X", top, W end, box culvert;
NE-22.8' to chiseled "X", top, E end, box culvert;
SE-63.1' to nailed "X" on power pole;
N-2610.70' to NE corner, Section 17;
S-2610.70' to SE corner, Section 17.